



## EverAlert® Communication System



Innovation for a Safer World.



Mon, Mar 22, 2021  
43°F ☀ PM

### Instant Communication

Safety alerts as they happen  
Synchronized time  
Event reminders and audio alerts  
Weather alerts by county



## One system to manage your critical communication.

EverAlert® from American Time is an advanced, powerful communication system that delivers better communication and productivity through daily messaging, emergency alerts and synchronized clocks.



### Synchronized Clocks

Ensure everyone is on the same, precise time with synchronized clocks. Features such as countdown timers and buzzers keep meetings, classes, and shift changes running smoothly.

### Digital Signage and Messaging

Improve your building's communication with clear, instant messages. Customize messages and use audio/visual cues to keep everyone informed — even by department or by room.

### Emergency Notifications

Keep critical communications clear and timely during threats. Automatic or custom messages instantly inform everyone how to stay safe. Integrate with other building systems like fire alarms, P.A., lockdown and even weather alerts.



## EDUCATION

The EverAlert system saves schools time, money, and complexity when managing critical communications and safety systems.



## OFFICES

Whether you have a staff of five or 5,000, EverAlert deploys efficient communications throughout an office building or entire corporate campus.

## HEALTHCARE

In clinics and hospitals, EverAlert keeps staff and patients informed. It delivers daily news and reminders, as well as instant alerts and instructions by department or floor.



## Who Uses EverAlert?

The EverAlert communications system keeps people safe and secure, while saving time, money and complexity when managing organizational communications. It is the single solution that improves safety, connection and efficiency throughout a building or campus.

Many industries have discovered the benefits of daily messaging, emergency notifications and synchronized time.

## LARGE FACILITIES

Deliver instant, clear news and emergency notifications with audio alerts. Perfect for large settings such as warehouses, manufacturing facilities, and distribution centers that can have higher levels of environmental noise.





Audio Alarms for  
Immediate Response

## Keep Classes, Meetings and Shifts on Time

Consolidate clock, bells, alarms, and messaging systems into one easy technology. Streamline the management of many building communication systems!

## Quickly Alert for Better Security

During a threat or drill, deliver clear and timely instructions by room, grade or department. Visual and audio alerts are perfect for noisy environments or those with special hearing needs.

“The ability to combine bells, clocks, signage, emergency notifications, and safety was the golden ticket for me.”

- **AUSTIN S.**, IT DIRECTOR

## Clearly Inform with News and Messages

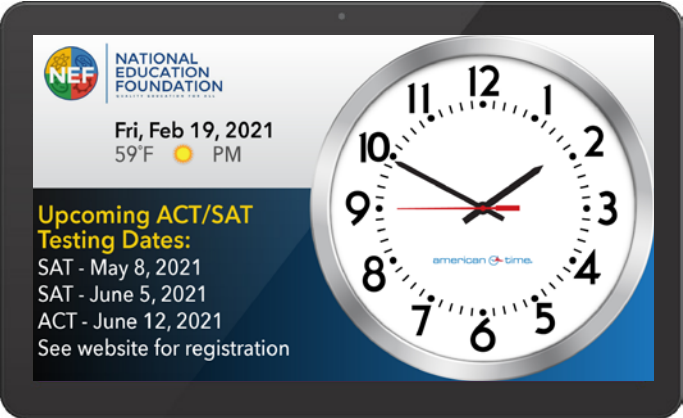
Display messages about news, meetings and events. Customize by department, grade or floor. Get the right message to the right audience.

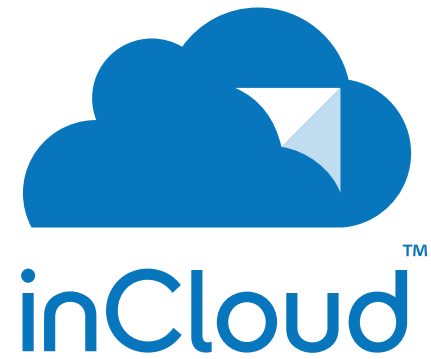
## Integrate Other Systems for Maximum Efficiency

Integrate EverAlert messages with your existing building systems, like fire and lockdown. When an alarm is triggered, instantly display messages within your building and notify authorities.



Visual Cues for Noisy  
Environments





## EverAlert is Powered by the inCloud Management Portal

Daily updates and announcements should be intuitive. Emergency alerts need to be immediate. The inCloud management portal allows your team to create, control, and schedule the messages, news and emergency alerts that are critical to your organization.

### Set-Up, Manage and Monitor EverAlert—Easily

The easy-to-use inCloud management portal lets you efficiently manage all EverAlert displays to keep your building running smoothly.

- Schedule and deliver daily news and emergency information to your whole organization
- Send custom messages by room, floor, department, grade, or any other segment



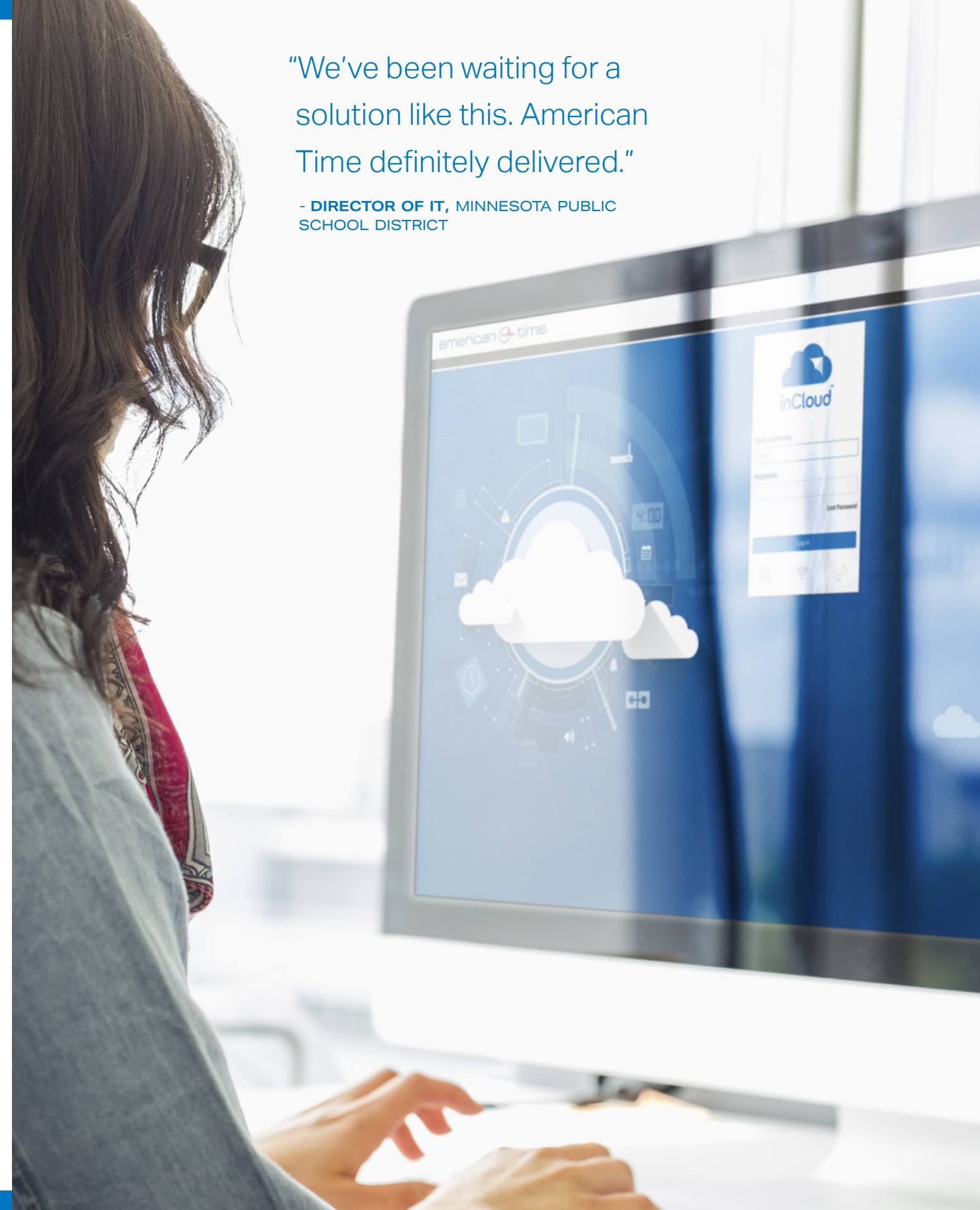
### inCloud: In-Depth

Proactively monitor EverAlert to maximize uptime, use and efficiency.

- Manage all users, notification and action audits, and license status
- Create and schedule messages
- Use pre-loaded template messages to save time
- Deploy alarms on demand
- Schedule bells, messages, and audio alerts
- View detailed reports to track system activity
- Receive automated device status reports
- Assign messaging capabilities to room or department leads for even easier communication
- Consolidate management of other American Time products, including Wi-Fi and PoE clock systems

"We've been waiting for a solution like this. American Time definitely delivered."

- **DIRECTOR OF IT**, MINNESOTA PUBLIC SCHOOL DISTRICT



## EverAlert Options to Fit Your Technology and Needs

An alert system should be easy to use. It should work with the technology you have or allow you to easily create and integrate a new system. American Time offers options for building, connecting and extending EverAlert technology in your building or campus.



DIGITAL / ANALOG

### THE DYNAMIC DISPLAY SYSTEM

Easy-to-read displays communicate EverAlert information. A variety of screen options include traditional clock face (analog) or digital clock display; banner or full-screen messaging formats; and the ability to mount displays with landscape or portrait orientation. EverAlert information is communicated via Ethernet or Wi-Fi network.

### DYNAMIC VIEW FOR EXISTING SCREENS

Dynamic View allows you to display EverAlert content on your existing digital displays through an HDMI input. Perfect for communicating news, alerts, and precise time in conference rooms, lunchrooms and large common areas.

### THIRD-PARTY ALARM INTEGRATIONS

Bridge communications between third-party system alarms/alerts and EverAlert. When an alarm is activated from a lockdown, weather, medical emergency or other event, your pre-loaded or custom message appears on EverAlert for instant communication throughout a building.





# EverAlert Dynamic Display



## Specifications

EverAlert Dynamic Display, part number EADV2

|  |   |
|--|---|
| Dimensions: master shipping carton, 2 displays | 38" L, 8 7/8" W, 18 1/2" H                    |
| Weight: master shipping carton, two displays   | 37lbs   |
| Weight: single (device only)                   | 8lbs  |
| Dimensions: single (device only)               | 20 3/16" L, 1 3/8" W, 12 3/16" H              |
| Dimensions: display screen diagonal            | 21.5"   |
| Lighting: screen                               | LCD with LED backlight                        |
| Resolution: display screen                     | 1920 x 1080                                   |
| Mounting formats                               | Landscape (horizontal) or portrait (vertical) |
| Internal speakers                              | 2 each at 2W                                  |
| USB 2.0 ports                                  | 2   |
| External speaker output jack                   | 3.5mm   |
| Wired LAN connectivity                         | 10/100M, RJ45 connector                       |
| Wireless LAN connectivity                      | 802.11b/g/n (2.4GHz)                          |
| USB provisioning                               | USB drive with AES encryption                 |
| Wired provisioning                             | LAN/DHCP Web portal on network connection     |
| Time synchronization support                   | 2 static IP or DNS pool<br>SNTP servers       |
| Clock battery backup for power outages         | CR1220 lithium                                |
| Maximum relative humidity                      | 85%   |
| Operating temperature                          | 32 °F – 104 °F                                |
| Input voltage to power supply                  | 100-240VAC, 50/60Hz                           |

## FEATURES

- Smart 22" class HD screen with built-in speakers
- EverAlert supports a virtually unlimited number of displays
- Display functions in either landscape or portrait orientation
- Communicates to the inCloud Management Portal through wired Ethernet or Wi-Fi network
- Resumes normal operation without intervention after a temporary power interruption
- Operator adjustable or scheduled screen brightness
- VESA mounting for easy installation
- (Optional) Custom mounting bracket with power supply holder
- Scheduled sleep mode for energy conservation
- 1 year warranty



# EverAlert Dynamic View



| Specifications  |                               | EverAlert Dynamic View, part number EABOX |   |
|---|-------------------------------|---|---|
| Dimensions, (device only)                             | 7.5"L x 3.75"H x .75"W        | Wired provisioning                        | LAN/DHCP Web portal on network connection |
| Weight (device only)                                  | 1.1 lbs                       | Time synchronization support              | 2 static IP or DNS pool SNTP servers      |
| Dimensions, master shipping carton, one Dynamic View. | 11.25"L x 3"H x 9.25"W        | Clock battery backup for power outages    | CR1220 lithium                            |
| Weight, master shipping carton, one Dynamic View      | 2.64 lbs                      | Relative humidity                         | 85% maximum, non-condensing               |
| Resolution, display screen                            | 1920 x 1080                   | Operating temperature                     | 32 °F – 104 °F                            |
| Displayed format                                      | Landscape (horizontal)        | Input voltage to power supply             | 100-240VAC, 50/60Hz                       |
| USB ports   | 2                             | Output voltage from power supply          | 12VDC                                     |
| External speaker output jack                          | 3.5mm                         | Energy efficiency                         | Level VI                                  |
| Wired LAN connectivity                                | 10/100M, RJ45 connector       | Power consumption                         | 9.5W (average), 14.5W (maximum)           |
| Wireless LAN connectivity                             | 802.11b/g/n (2.4GHz)connector | Certifications                            | RoHS, CE/FCC, PSU with UL                 |
| USB provisioning                                      | USB drive with AES encryption |   |   |

## FEATURES

- HDMI connection to TV/monitors
- EverAlert daily messaging, emergency notifications, and synchronized clocks
- Supports HD, large-format resolutions
- Landscape display orientation
- Communicates to the inCloud Management Portal through wired Ethernet or Wi-Fi network
- Wired LAN and wireless LAN connectivity
- Slim profile for easy mounting
- 1 year warranty

# EverAlert Integrator



| Specifications   |  | EverAlert Integrator, part number EAIV3    |                           |
|--|--|--|---------------------------|
| An EverAlert Integrator bridges communication between the EverAlert system and other building alarm systems.   |  | Wired LAN connectivity                     | 10/100M, RJ45 connector   |
| The Integrator contains two general-purpose inputs that connect to contact closure switches. Typically, the Integrator is connected to an alarm panel that, when triggered, will show an alarm message on all active EverAlert Displays and send a text or email to key personnel. |  | Monitored switch style                     | Normally-open dry contact |
| Multiple Integrators can be used with an EverAlert system to increase the number of alarms utilized.   |  | Monitored switch wiring length             | 25ft maximum              |
|  |  | Number of monitored switches               | 2 per Integrator          |
|  |  | Number of output switches                  | 1 per Integrator          |
|  |  | Number of Integrators per EverAlert system | 5 Integrators per system  |
|  |  | Input voltage to power supply              | 100-240VAC, 50/60Hz       |
|  |  | Output voltage from power supply           | 9VDC                      |

## FEATURES

- Integrate with third party systems for automatic alerting, such as fire and lockdown
- Normally-open (dry contact) inputs for fast, reliable integrations
- Integrators can be configured to monitor fire alarm panels, switches, or any other normally open switches used for emergency alarm purposes
- 1 year warranty




140 3rd Street South  
Dassel, MN 55325  
Ph. 800-328-8996

## Learn More about EverAlert

To learn more about EverAlert and request a consultation, visit [american-time.com/everalert](http://american-time.com/everalert)

Visit [american-time.com](http://american-time.com) to explore more communication and synchronized time solutions.

A photograph of a classroom with several students sitting at desks. In the foreground, a young Black male student is focused on writing in a notebook with a pencil. Behind him, other students are also working, though they are slightly out of focus. A large map of the United States is visible on the wall in the background.

"The teachers appreciate EverAlert's ability to display analog or digital clock times, the daily school news and even classroom-specific messages like upcoming test reminders."

**CHRIS S., SUPERINTENDENT**

© 2021 American Time & Signal Company. All rights reserved. American Time, the American Time Logo, and all other American Time company, product and solution names and slogans are trademarks or registered trademarks of the American Time & Signal Company. Other names and marks are the property of their respective owners.