



INSTALLATION MANUAL

AM-1 MOUNTING BRACKET with HEIGHT / ANGLE ADJUSTMENT

HY-AM1B-Q
HY-AM1W-Q

1. GENERAL DESCRIPTION

The AM-1 mounting bracket with height and angle adjustment is an optional kit for mounting the AM-1 Real-time Steering Array Microphone on the ceiling. The mount is available in Black (HY-AM1B-Q) or White (HY-AM1W-Q).

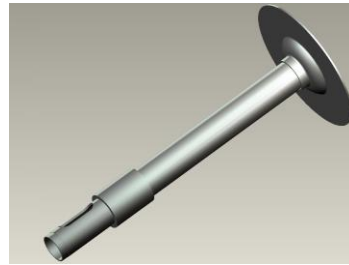
The HY-AM1x-Q includes:



ADJUSTABLE BRACKET



M4 SCREWS (X4)



ADJUSTABLE POLE

Installation Notes:

* Installation of the AM-1 with this product requires the use of MB-AM1B-Q (black) or MB-AM1W-Q (white) Microphone Bracket (sold separately).

** The mounting screws and wall anchors are provided with the MB-AM1 Microphone Bracket.

Suspended from Hard Ceiling:

Step 1: Line up the bottom of adjustable pole to surface, mark hole locations and drill holes (1/4 inch (approx. 6mm) diameter) for plastic wall anchors.

Step 2: Insert anchors from AM-1 Mounting Bracket into holes until flush.

Step 3: Align pole flange on surface, use #10 flat head screws to secure in place by tightening screws.

Step 4: Align AM-1 Microphone Bracket (not shown) to the angle adjusting bracket, use the M4 screws to secure the microphone bracket to the adjustable bracket.

Step 5: Turn the knurled fastener on pole to adjust height and rotate bracket to proper orientation. After Microphone is installed use the thumb screw fasteners to adjust the angle.

Step 6: With the Microphone Bracket secured, follow instructions from the AM-1 Microphone Bracket to install the Microphone to the mounting bracket (see step 8).

*For suspended ceiling with drop-in tiles, it is highly recommended to use a backer panel support above the ceiling tile (1/4 inch MDF or equivalent) to assure structural stability. Also, recommend use of toggle bolts (drilling 5/8" holes) or appropriate fixing screws for >10lb weight load.

END RESULT OF INSTALL

