

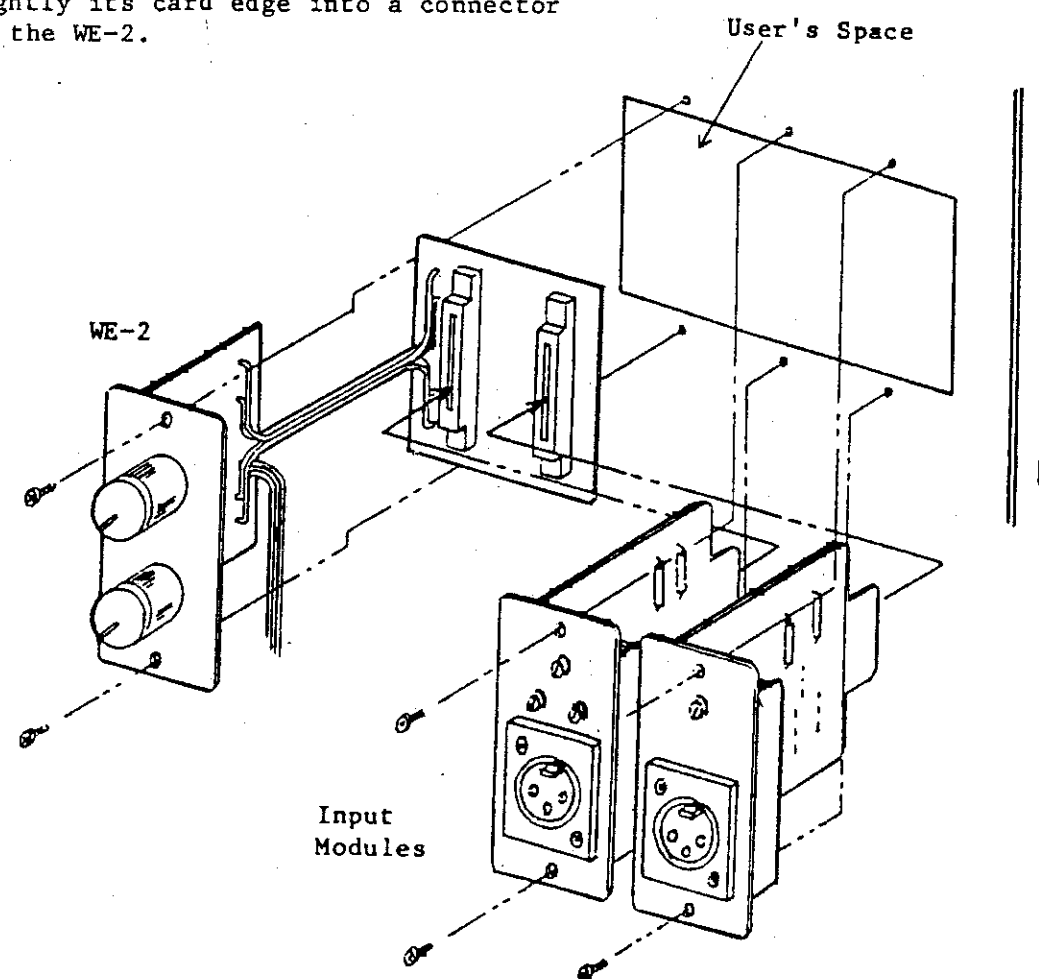
DESCRIPTION

The Toa WE-2 Expanding Kit increases the number of input of the Toa W-906A and W-912A IN-WALL amplifiers. Two more module input ports can be set up by inserting this expanding kit into amplifier's user's blank space, thus allowing the W-906A and W-912A amplifiers to have up to 8 inputs. It is possible to control the sound volume of an individual input. The WE-2 can accommodate all Toa modules for the 900 Series Amplifiers.

CAUTION: These servicing instructions are for use by qualified personnel only. To avoid electric shock do not perform any servicing other than that contained in the Operating Instructions unless you are qualified to do so. Refer all servicing to qualified service personnel.

MOUNTING THE WE-2 and INPUT MODULES

1. Remove a front cover.
2. Open a hinged chassis by unscrewing screws holding the chassis to a back box.
3. Remove a blank panel.
4. Install an expanding kit in a user's blank space.
5. Mount the input module(s) inserting tightly its card edge into a connector of the WE-2.

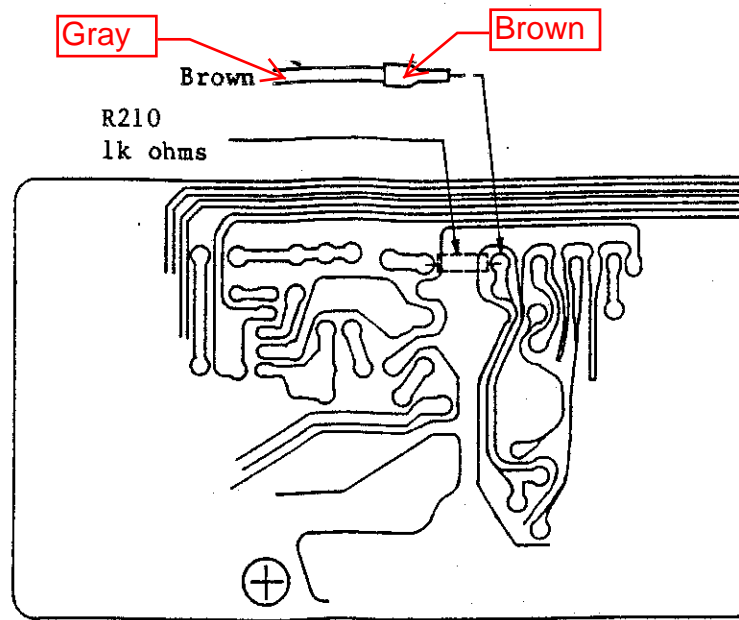


CONNECTION

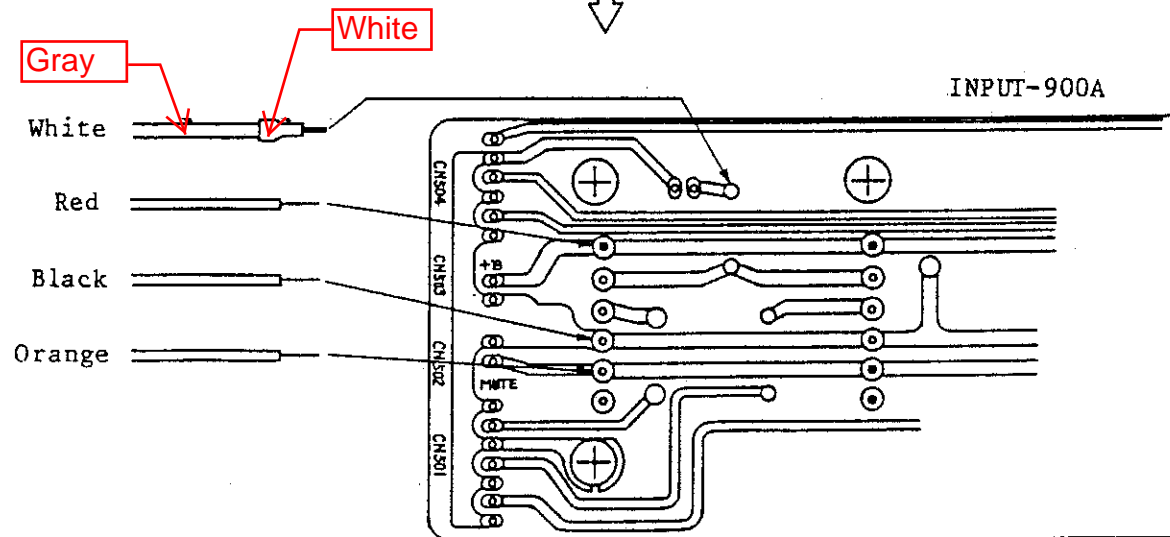
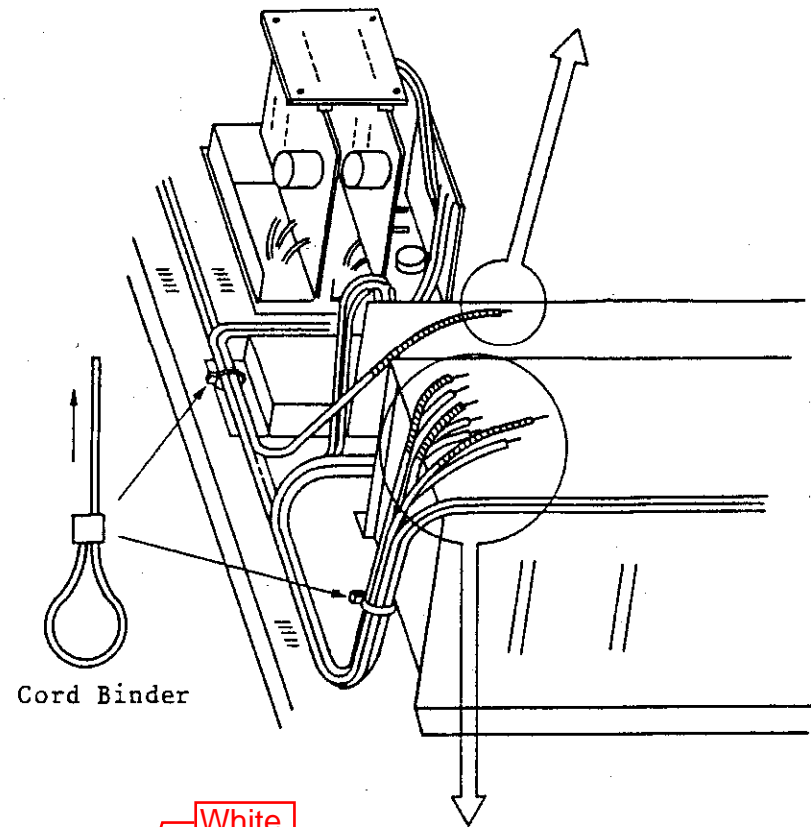
See an illustration given below.

Solder the lead wires to connect.
After connection, bind all the
lead wires together by means of a
cord binder attached to the kit.

CAUTION: Be sure to avoid improper
lead wire connections.



PRE:W-900A



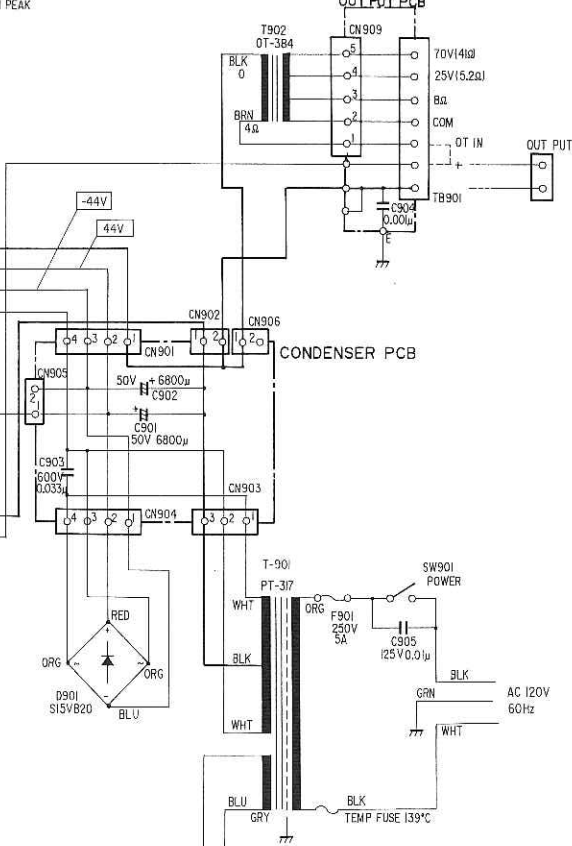
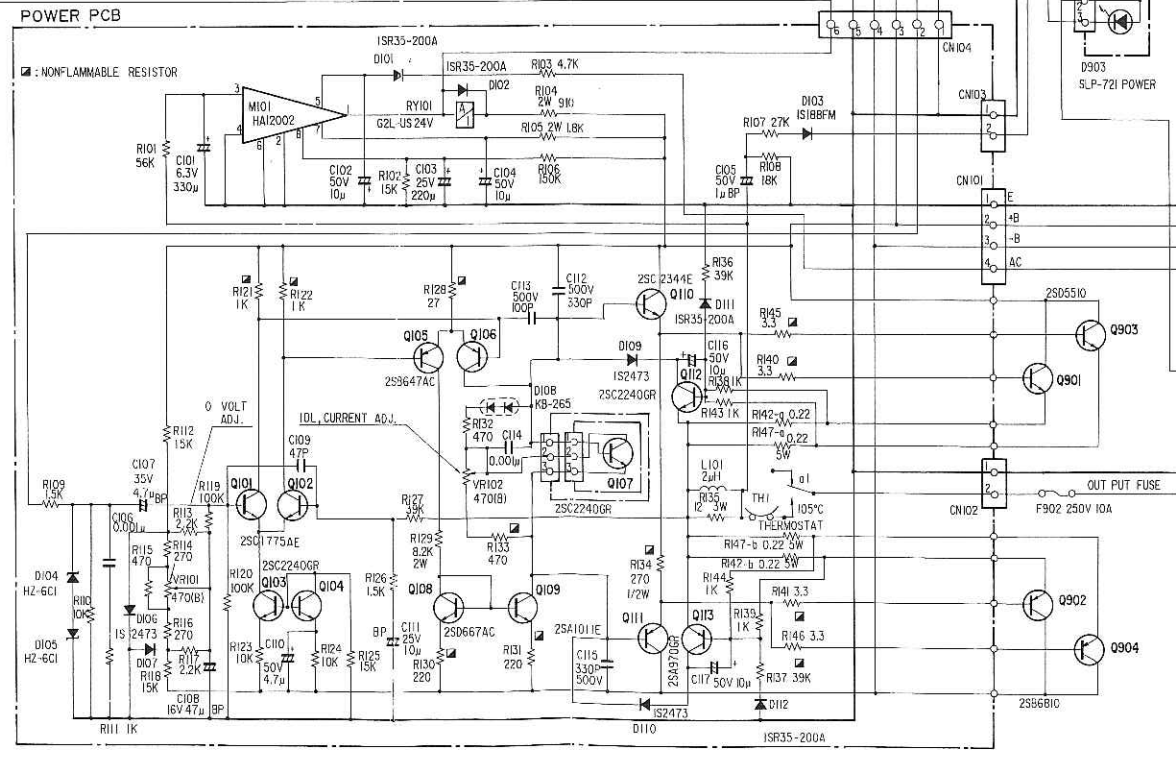
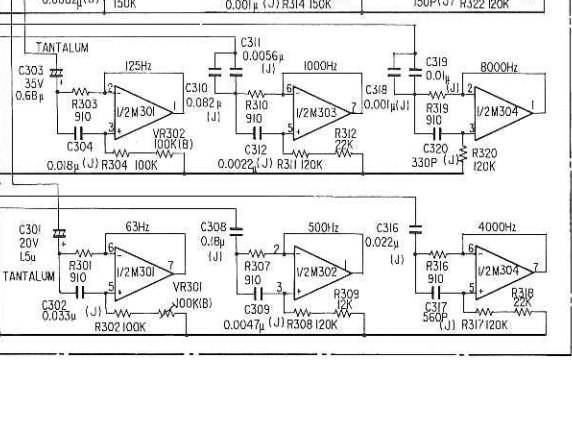
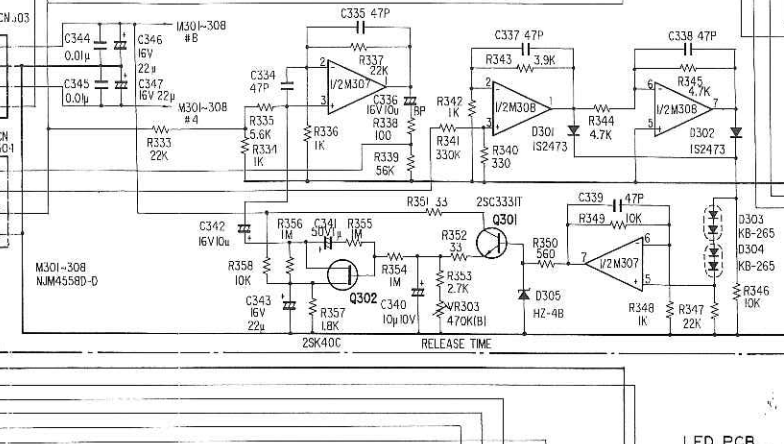
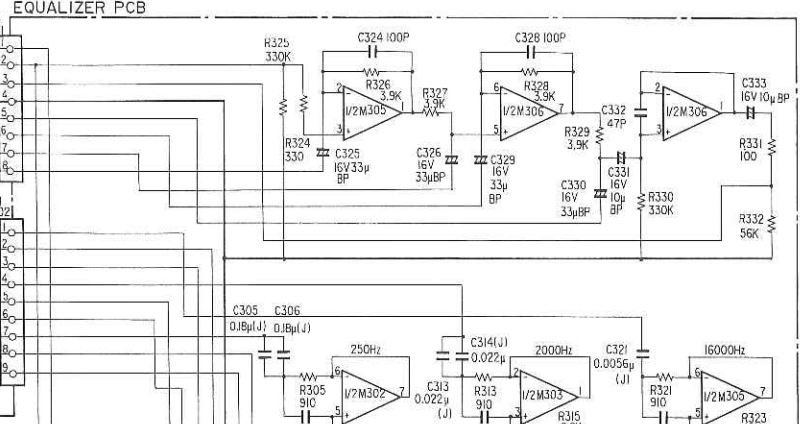
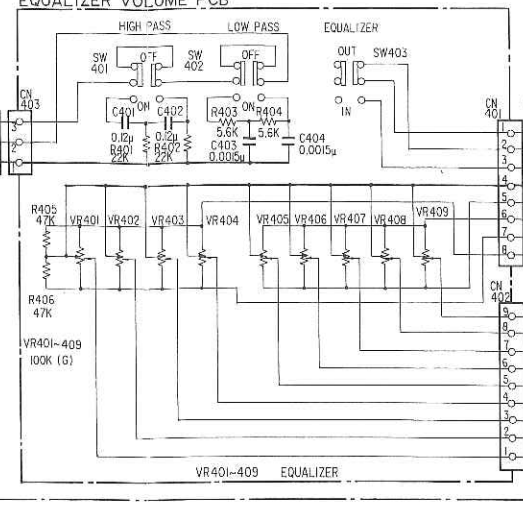
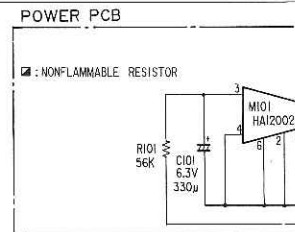
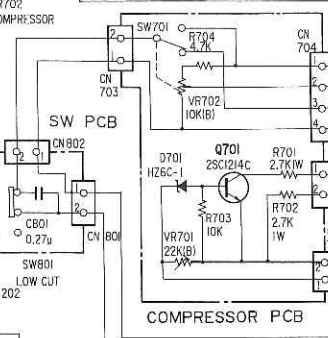
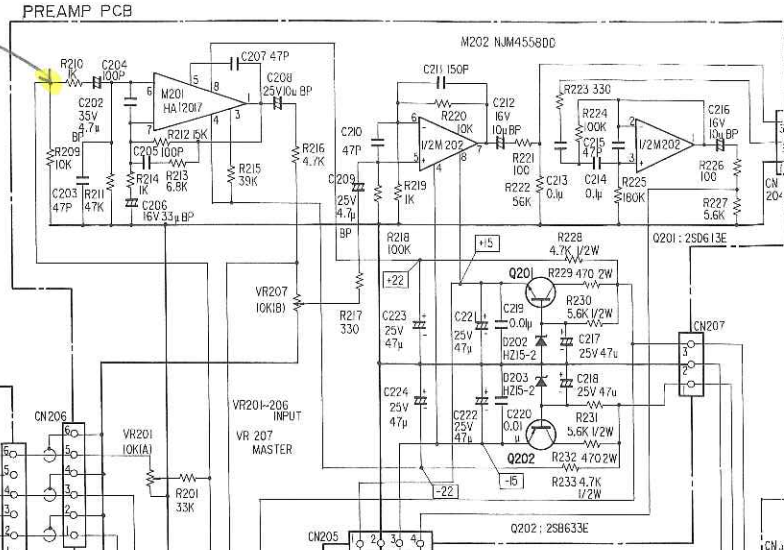
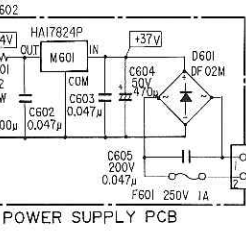
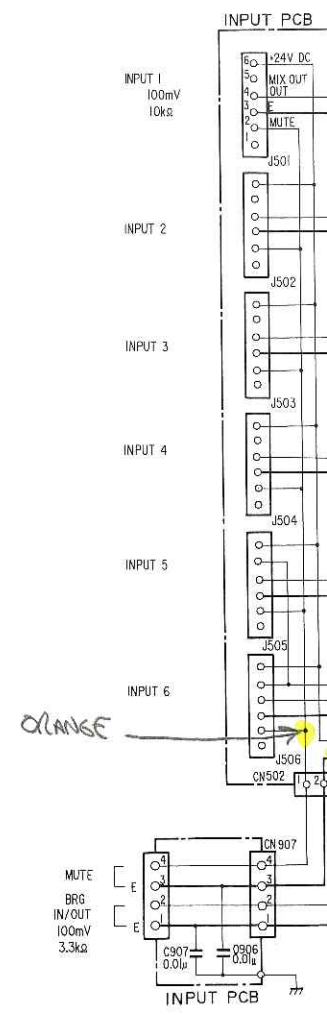
W-912A

WE-2
Connection Points

A
B
C
D
E

ORANGE

RED WHITE
BLACK

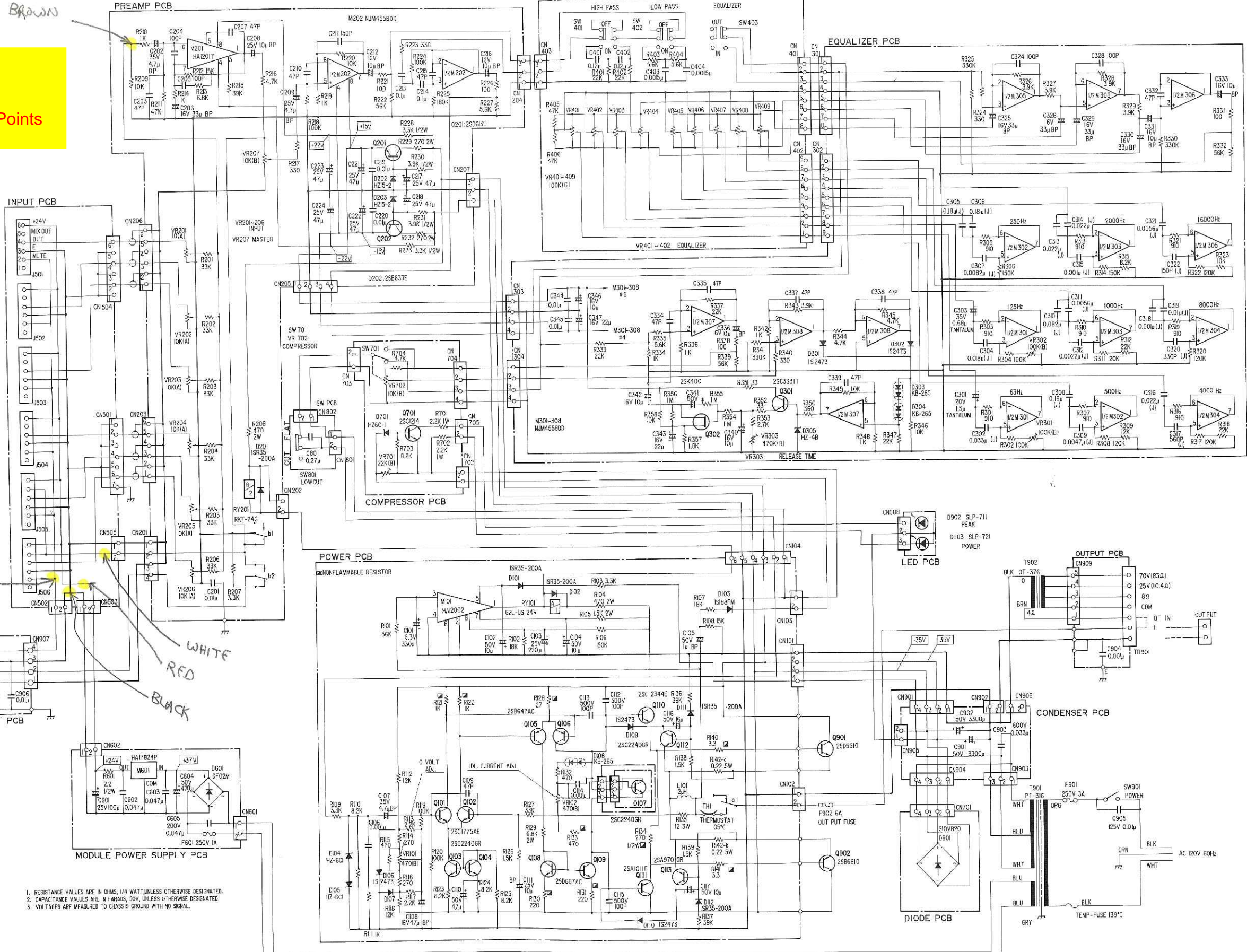


1. RESISTANCE VALUES ARE IN OHMS, 1/4 WATT, UNLESS OTHERWISE DESIGNATED.
2. CAPACITANCE VALUES ARE IN FARADS, 50V, UNLESS OTHERWISE DESIGNATED.
3. VOLTAGES ARE MEASURED TO CHASSIS GROUND WITH NO SIGNAL.

5. SCHEMATIC DIAGRAMS

W-906A

WE-2
Connection Points



1. RESISTANCE VALUES ARE IN OHMS, 1/4 WATT UNLESS OTHERWISE DESIGNATED.
 2. CAPACITANCE VALUES ARE IN FARADS, 50V, UNLESS OTHERWISE DESIGNATED.
 3. VOLTAGES ARE MEASURED TO CHASSIS GROUND WITH NO SIGNAL.