

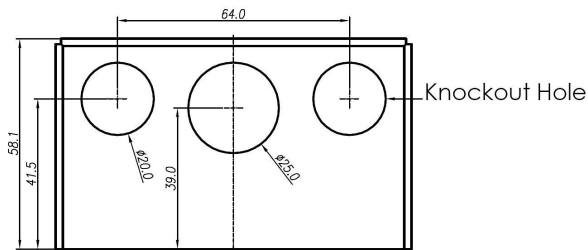
DESCRIPTION

The YC-400 is a 4-gang electrical back box for wall flush mounting of TOA 4-gang size intercom stations such as N-SP80AS1 or N-SP80VS1.

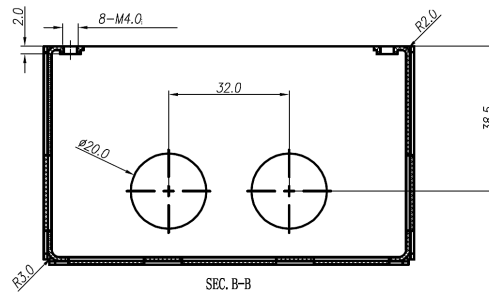
SPECIFICATIONS

Finish	SGCC metal, silver
Dimensions	3.87"(w) x 7.36"(h) x 2.24"(d) (98.2 x 187.0 x 57.0 mm)
Weight	15.0 oz (425g)

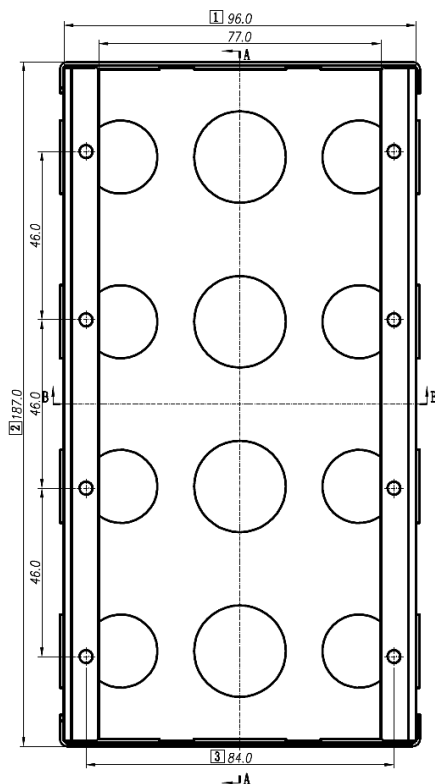
APPEARANCE



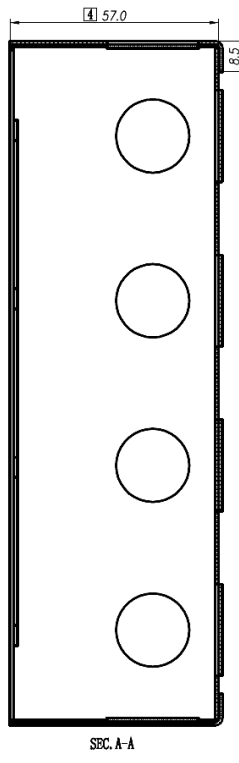
Top View



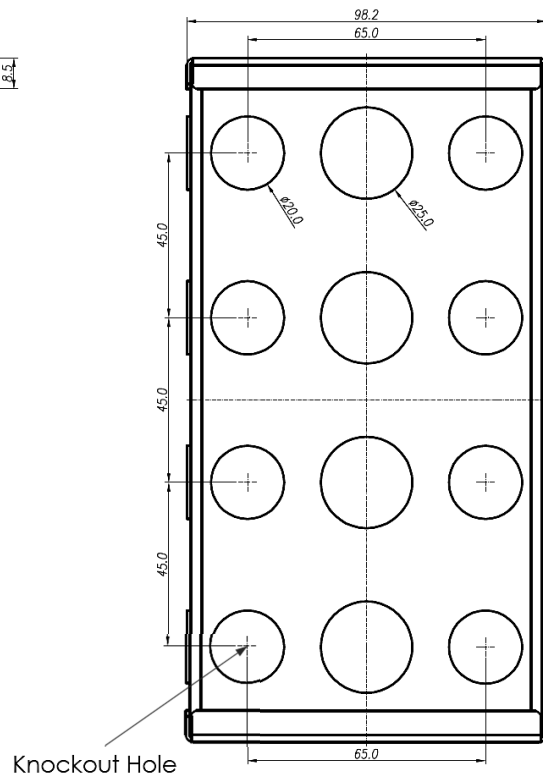
Bottom View



Front View



Side View



Back View