

DESCRIPTION

The N-CC2564 Network Combination Dome Camera can be connected directly to a LAN (10 BASE-T/100 BASE-TX).

It features simultaneous transmission of both MPEG-4 and JPEG images, permitting smoothly-moving images and high-quality still images to be recorded and monitored. The N-CC2564 also transmits bidirectional high-quality audio signals as uncompressed PCM or with sub-band ADPCM compression.

The N-CC2564 combines with a high-speed camera drive that permits one 360° horizontal rotation per second and a 23x optical zoom lens. Up to 255 arbitrary positions can be preset and such preset positions can be instantaneously repeated. Other features include timer, a motion detection, auto flip, wide dynamic, black & white mode, a 12x electronic zoom, privacy masking, and tracing.

SPECIFICATIONS

* 0 dB = 1 V

Power Source	24 V AC, 50/60 Hz
Power Consumption	20 W (normal operation), 25 W max. (1.6 A max.)
Video Output	VBS 1.0 V(p-p), 75 Ω, BNC-R jack, NTSC
Audio Input	1 channel, -10 dB*, 10 kΩ, unbalanced, RCA pin jack
Audio Output	1 channel, -10 dB*, low impedance, unbalanced, RCA pin jack
Alarm Input	8 channels, no-voltage make contact input, open voltage: 9 V DC, short-circuit current: Under 10 mA (settable alarm action)
Auxiliary Contact Output	3 channels: Open collector output, withstand voltage: 30 V DC, permissible current: Under 50 mA 1channel: Relay contact output, permissible voltage: 30 V DC, permissible current: Under 1 A
Camera	
Image Device	1/4 type CCD
Resolution	Horizontal: 480 lines (at center)
S/N Ratio	50 dB
Synchronization	Internal synchronization/Power synchronization (phase adjustable when in power synchronization mode)
Minimum Required Illumination	High-sensitivity function OFF: 3 lx (50 IRE), 1 lx (20 IRE) High-sensitivity function ON: 0.03 lx (50 IRE), 0.01 lx (20 IRE)
Backlight Compensation	WIDE DYNAMIC/Pattern 1/Pattern 2/Pattern 3/OFF
Dynamic Range	46 dB (backlight compensation: WIDE DYNAMIC operation)
High-Sensitivity Function	B/W mode and slow shutter mode (32 times max.)
White Balance	ATW/ AWB
Flicker Reduction	Automatic correction
ID	8 characters (alphanumeric and symbols) Camera, Position, Trace, Auto-pan, Tour, Home, Alarm, Sector, AUX
No. of Preset Positions	255 positions + home
Automatic Operation	Auto-pan, Preset sequence, Auto-trace (2 preset patterns (60 s)), Tour (16 preset patterns)
Timer	Refresh: Starts at the preset time every day or every week by timer settings Program: Settable 16 actions
Other Function	Auto Flip, Freeze preset, Manual limit, Privacy masking (up to 8), Motion detection (each 8 presets at each 4 positions)
Lens	
Electronic Zooming	12X zooming
Auto-Focus	One push/stop AF/continuous
Zooming	23X
Effective Focal Length	f = 3.6 - 82.8 mm (23X)
Effective Angle of View	Horizontal: 54° (W) - 2.5° (T) Vertical: 41.6° (W) - 1.9° (T)
Maximum Aperture	F 1.6 (W) - F 3.7 (T)
Zoom Speed	WIDE end to TELE end Approx. 1.5 s (preset operation), Approx. 2.9 s (manual operation)
Pan/Tilt Head	
Rotating Range	Panning: Endless 360° rotation Tilting: +5° to -185°
Rotating Speed	Panning/Tilting: 360°/s max. (preset operation) 360°/s max. (manual operation)

■ SPECIFICATIONS

Network	
Network I/F	10 BASE-T/100 BASE-TX, Auto-Nego/Manual: RJ45 connector
Network Protocol	TCP, UDP, SIP, RTP, IGMP, HTTP, ARP, DHCP, DNS, SNMP, FTP, SMTP
Video Compression/ Resolution	MPEG-4: D1 (720 × 480), Half D1 (720 × 240), QVGA (320 × 240) JPEG: D1 (720 × 480), Half D1 (720 × 240), VGA (640 × 480), QVGA (320 × 240), QQVGA (160 × 120)
Frame Rate	MPEG-4 (D1, max. 30 fps) + JPEG (D1, max. 5 fps)
Audio Compression/ Decompression	Sub-band ADPCM, PCM (non-compression)
Audio Sampling Frequency	8 kHz, 32 kHz
Image Transfer Rate	MPEG-4: 4 Mbps max
Simultaneous Connected Number	5 (MPEG-4: 4, JPEG: 1), When streaming mode is set: No limit (MPEG-4 only)
Operating Temperature	
	-10°C to +50°C (continuously active for operation at temperature below 0°C) 14°F to 122°F (continuously active for operation at temperature below 32°F)
Operating Humidity	Under 90% RH (no condensation)
Application	Indoor use
Finish	Base: PC/ABS resin, cool gray Camera: PC/ABS resin, black
Dimensions	∅168 × 234 (H) mm (∅6.61" × 9.21")
Weight	2 kg (4.41 lb)
Accessory	Camera mounting screw ×4, Safety wire ×1, Category5 shielded coupler (female to female) ×1, Extension connector (Alarm input, AUX contact output) ×1 each, CD-ROM (Software decoder: N-SD2000, manual (PDF)) ×1
Option	Ceiling mounting cover: C-BC511C, C-BC511C-S Flush ceiling mounting bracket: C-BC511U, C-BC511U-S Ceiling suspension bracket: C-BC511P Wall mounting bracket: C-BC511W Ceiling mounting bracket: C-BC511A

Personal Computer Requirements (for Software decoder)

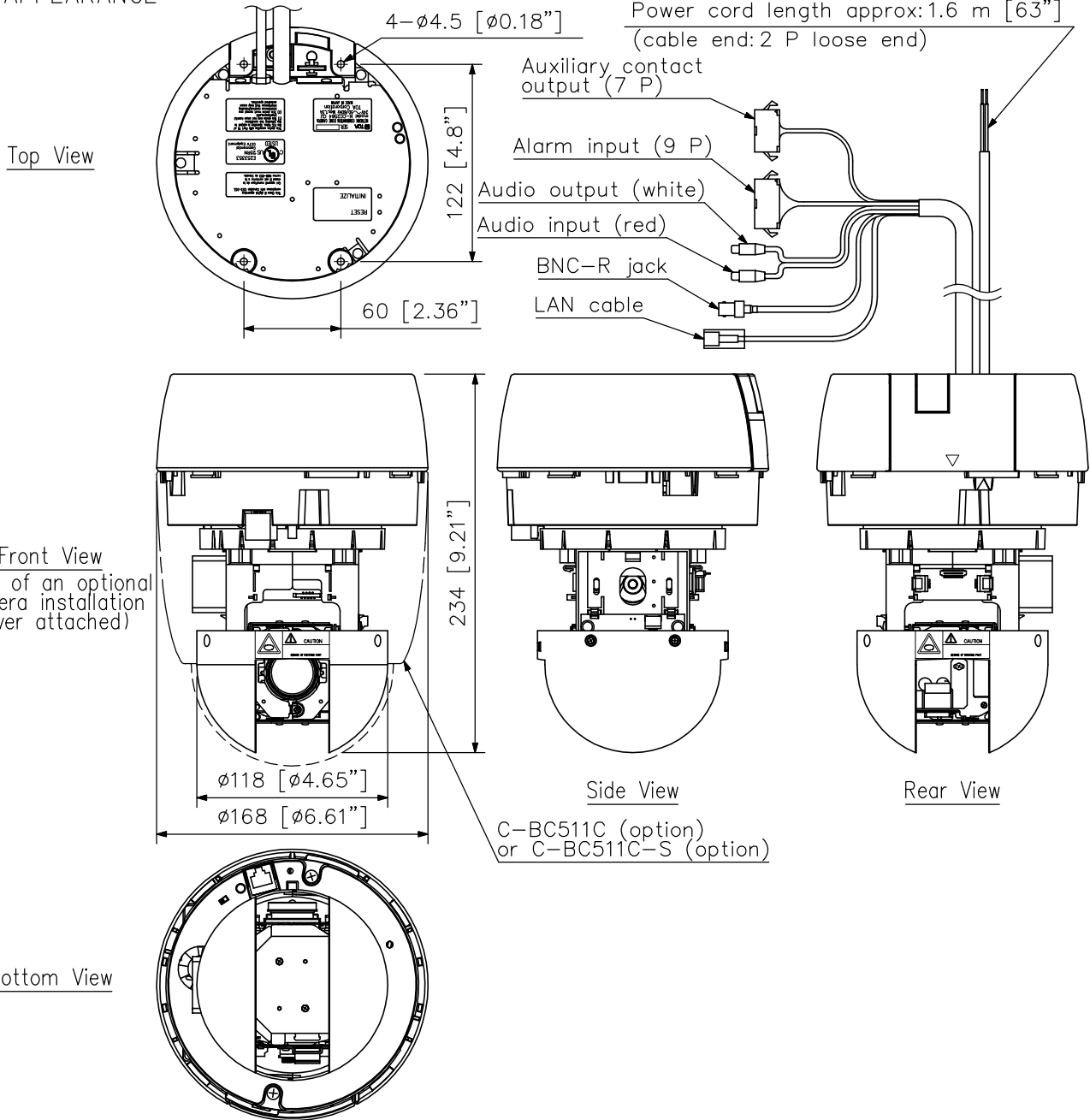
Personal Computer Requirements	PC/AT compatible (usable on a network) CPU: Pentium 4, over 3 GHz Memory: Over 512 MB Display adapter: XGA (1024 × 768 pixels), Recommended: Intel Chipset Usable on DirectX 9.0a or later Sound controller: Usable over DirectX 9.0a or later Network adapter: Over 100 BASE-TX
OS	Windows XP Professional
Web Browser	Internet Explorer 6.0 or later

※ Pentium is a trademark of Intel Corporation.
※ Windows is a trademark of Microsoft Corporation.

NETWORK COMBINATION DOME CAMERA

N-CC2564(CU)

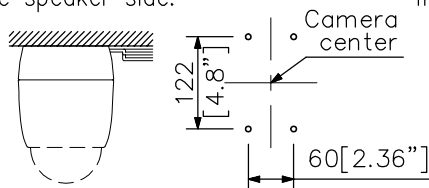
■ APPEARANCE



■ INSTALLATION EXAMPLE

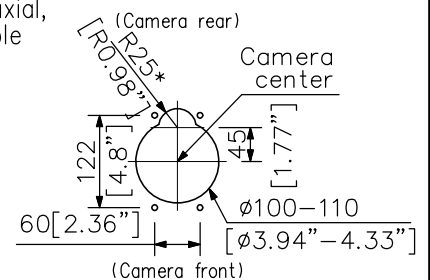
Mounting to a heavy-duty ceiling (such as a concrete ceiling)

1. When routing both the coaxial, power cables and signal cable from the speaker side.
2. When routing both the coaxial, power cords and signal cable from the ceiling panel.



Note: For anchor bolts, use the unit driving type female screws (M4).

Note: Make a mounting hole for cable routing as shown at right.



* Make a 50 mm-diameter (1.97") hole with its center positioned exactly 45 mm (1.77") behind the camera center.

UNIT:mm SCALE:1/4