
TOA SPEAKER SYSTEM

WEATHER-RESISTANT SPEAKER

F-160WP



DESCRIPTION

TOA's F-160WP two-way, ported speaker system combines durable, weather-resistant construction with superb acoustic characteristics. Ideal for outdoor applications and high-humidity areas, the F-160WP includes a 5" water-resistant cone speaker and 1" dome tweeter with a high power handling capacity.

The F-160WP is engineered to combine maximum efficiency with a flat frequency response when mounted in a half- or quarter-space environment. The typical position for a foreground/background speaker is against a wall or at the intersection of a wall and a ceiling or second wall. This is the acoustical environment for which the new F-Series is optimized.

An extremely durable, low-foam polypropylene resin enclosure ensures quality sound performance. An internal 70/100 volt transformer is included, which adjusts via a rotary switch under the rear cover.

The F-160WP is easy to install horizontally on walls or under eaves with an optional outdoor mounting bracket. To protect connection terminals, the enclosure has a rear cover with a cable feed slot.

FEATURES

1. Two-way, weather-resistant speaker system with 1" dome tweeter and 5" drip-proof woofer.
2. Ideal for outdoor applications and high-humidity locations, such as swimming pools, ice arenas and health clubs.
3. Includes built-in 70/100 volt transformer, adjustable via rotary switch under the rear cover.
4. Engineered to provide maximum efficiency with a flat frequency response when mounted in a half- or quarter-space environment.
5. Durable, low-foam polypropylene resin enclosure in dark gray enhances acoustic quality.
6. Enclosure has a rear cover with cable feed slot to protect connection terminals.
7. Installs easily on walls or under eaves with optional outdoor mounting bracket.

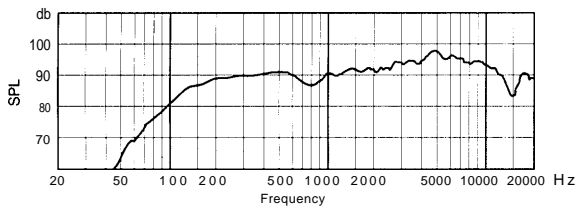
SPECIFICATIONS

Enclosure type	Bass-reflex
Speaker	low frequency 5" (13cm) drip-proof cone woofer high frequency 1" (3cm) dome tweeter
Rated impedance	100V Line: 330 Ω (30W 500 Ω (20), 1k Ω (10W), 2k Ω (5W) 70V Line: 170 Ω (30W), 330 Ω (15W), 500 Ω (10W), 1k Ω (5W), 2k Ω (2.5W)
Rated input power	30W
Output SPL	91dB (1W/1m)*
Crossover frequency	4kHz (passive network)
Frequency response	100Hz – 20kHz (-10dB) 150Hz – 13kHz (-3dB)
Input connector	Push terminal
Enclosure material	Polypropylene resin
Color	Dark gray
Dimensions (W x H x D)	9.8" x 6.2" x 6.7" (250 x 157 x 169mm)
Weight	8.6 lbs. (3.9 kg.)
Mounting bracket	YS-150WP

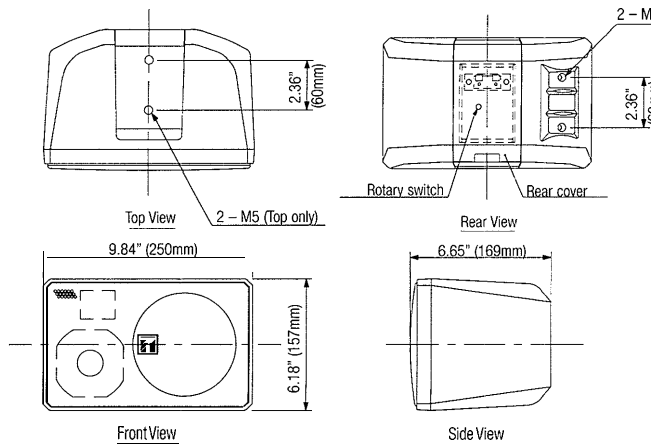
*Pink noise of 330Hz - 3.3kHz. All specifications subject to change.

CHARACTERISTIC DIAGRAM

Frequency Response (1W/1m: 1/3 Octave Pink Noise)



APPEARANCE & DIMENSIONAL DIAGRAM



ARCHITECT'S AND ENGINEER'S SPECIFICATIONS

The speaker system shall be the two-way, ported TOA F-160WP, which provides a wide frequency range and high power handling capacity. The F-160WP shall be engineered to combine maximum efficiency with a flat frequency response when mounted in a half- or quarter-space environment.

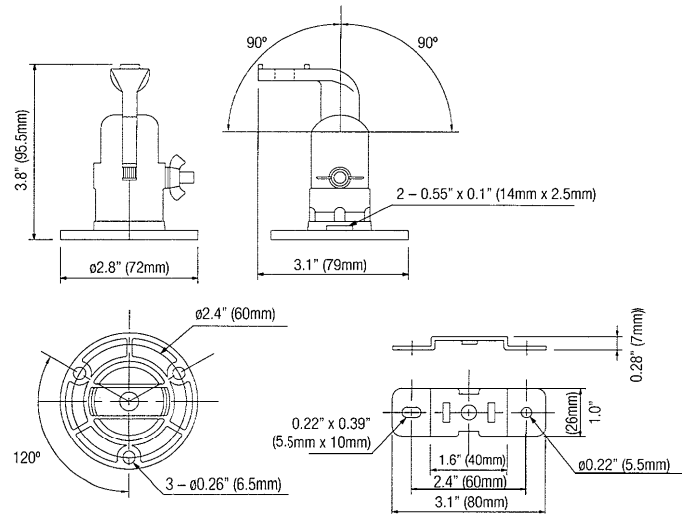
The F-160WP shall feature a 5" (13cm) drip-proof cone speaker and a 1" (3cm) dome tweeter. Frequency response shall be 100Hz - 20kHz, with crossover at 4kHz. Sensitivity shall be rated at 91dB (1W/1m).

The 160WP shall have a continuous pink-noise transformer input power rating of 30 watts and an internal 70/100 volt line matching transformer, adjustable via a rotary switch under the rear cover. A push-type input connector shall be available on all models.

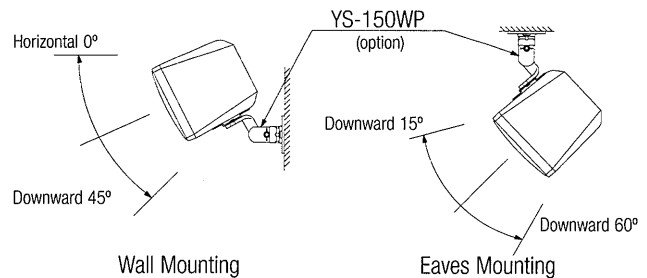
The enclosure shall be dark gray and composed of acoustically-efficient, polypropylene resin to ensure high quality sound performance. The speaker shall be easily mounted on walls or under eaves in a horizontal position with an optional YS-160WP outdoor mounting bracket. The enclosure shall have a rear cover with cable feed slot to protect connection terminals.

The F-160WP shall measure 9.8"W x 6.2"H x 6.7"D (250 x 157 x 169mm), and shall weigh 8.6 lbs. (3.9 kg.).

YS-150WP MOUNTING BRACKET



INSTALLATION DIAGRAM



*F-160WP cannot be positioned vertically using YS-150WP.



TOA Electronics, Inc. 601 Gateway Blvd., Ste. 300, So. San Francisco, CA 94080 Tel: 415-588-2538 Fax: 415-588-3349
TOA Canada Corp. 6150 Kennedy Rd., Unit 3, Mississauga, Ontario L5T 2J4 Tel: 905-564-3570 Fax: 905-564-3569

Printed in U.S.A. 5/96 © 1996 TOA Electronics, Inc.