

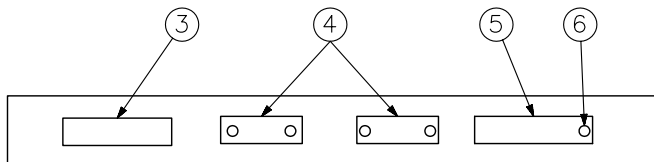
DESCRIPTION

The Q-TI-600 connects the local exchange (EX-610, EX-620, EX-630 or EX-200) to the remote extension exchange (S) via 4-wire rented lines to permit paging and conversation between the exchanges. It is possible to use a private line instead of the 4-wire rented line for direct connection between the exchanges.

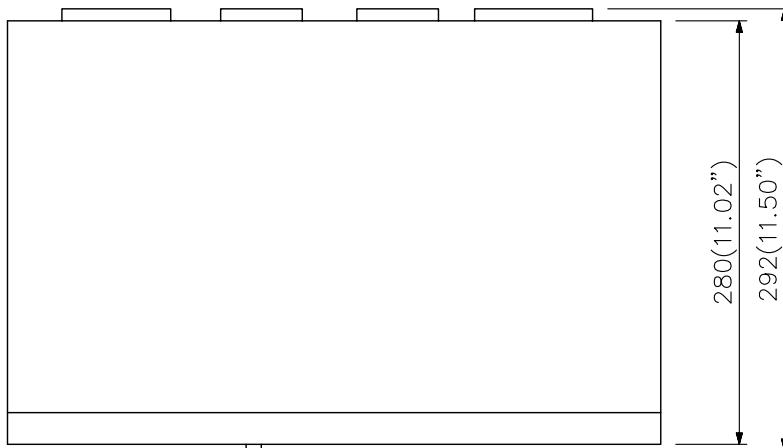
SPECIFICATIONS

Power Requirements	24 V DC (20 V ~ 28 V)
Current Consumption	Maximum 100 mA
Line Capacity	2 (expandable to 4 lines)
Unit Connection capacity	4 (2 for EX-610)
Dialing Signal	DTMF
Expansion Unit	Model Q-TI-20A
Installation	Desk-top or rack mounting
Ambient Temperature	0 °C to 40 °C
Finish	Panel : Black Case : Black Rack mounting bracket : Black
Weight	3.3 kg (7.3 lb.)
Accessory	Rack mounting bracket
Connection cable (option)	YR-802 or YR-806 (for connection between exchange and Q-TI-600) YR-803 (for connection between Q-TI-600 units)

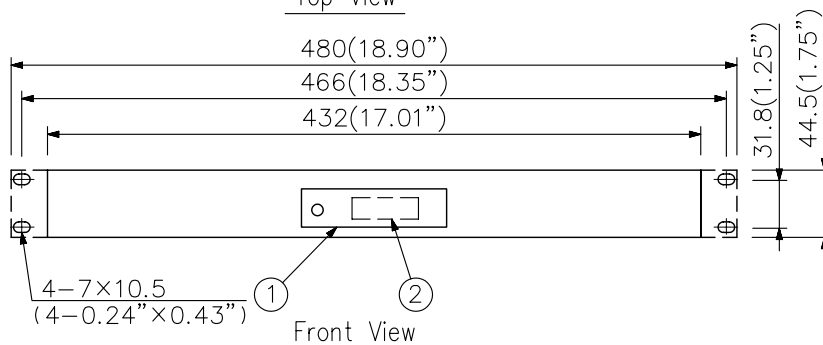
APPEARANCE



Rear View



Top View



Front View

1. Cover (acrylic resin)
2. Channel selector
3. Power input terminal/intercom line terminal
4. Control signal input connector (CN1, CN2)
5. Rented line terminal
6. Ground terminal

UNIT:mm SCALE:1/5