

## Note on Using the Web Function

**Make sure that the PC using the Web function has an appropriate version of Java installed.**

This handbook explains how to set live image distribution and playback image distribution on a PC using the Web function.

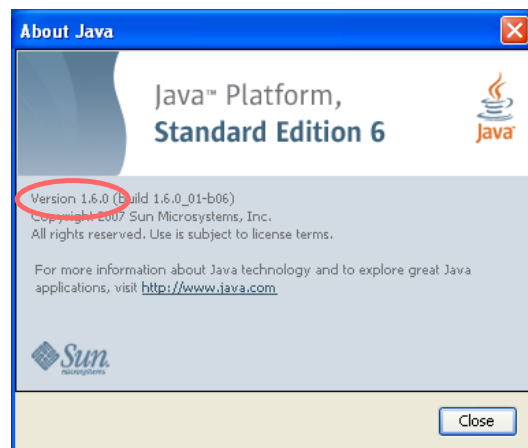
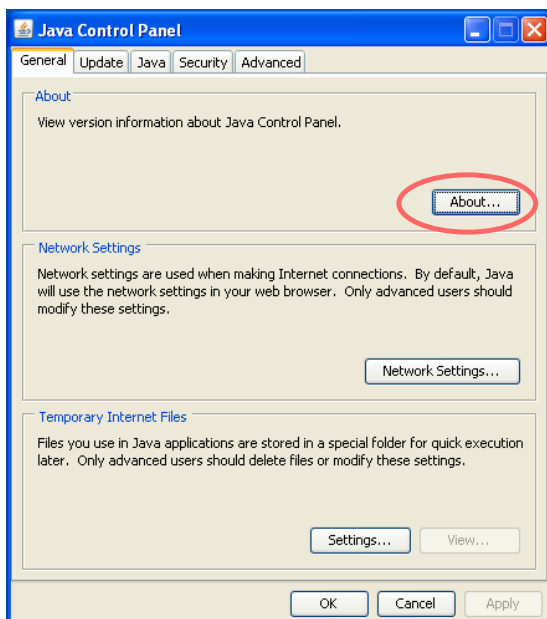
Perform the following settings if the version of Java installed on the PC is "1.6.x" (Java Environment Version 6 Update x):

### Notes

- Even if Java version 1.5 is already installed on the PC, this may be automatically upgraded to version 1.6 depending on the PC's settings or operating environment.
- Failure to perform the suggested settings may cause incorrect update of the images of live and playback distributions when using the Web function.

### 1. Version Confirmation Procedure

- (1) Double-click on "Java" on the control panel.
- (2) Click on the "About..." button in the View version information in the "General" tab.
- (3) Check the version number as "About Java" screen opens.



## 2. Setting procedures

- (1) Double-click on "Java" on the control panel.
- (2) Click on the "Settings..." button in the Temporary Internet files in the "General" tab.
- (3) The "Temporary Files Settings" screen as shown below opens, then uncheck the checkbox for "Keep temporary files on my computer."
- (4) Click on "OK."

