

SC-630T

PAGING HORN SPEAKER



The SC-630T is a compact, highly intelligible speaker suited to public address announcement applications. Its external speaker component finished with powder coating, and stainless steel bracket and screws ensure the unit's weatherproof capability.

Key features

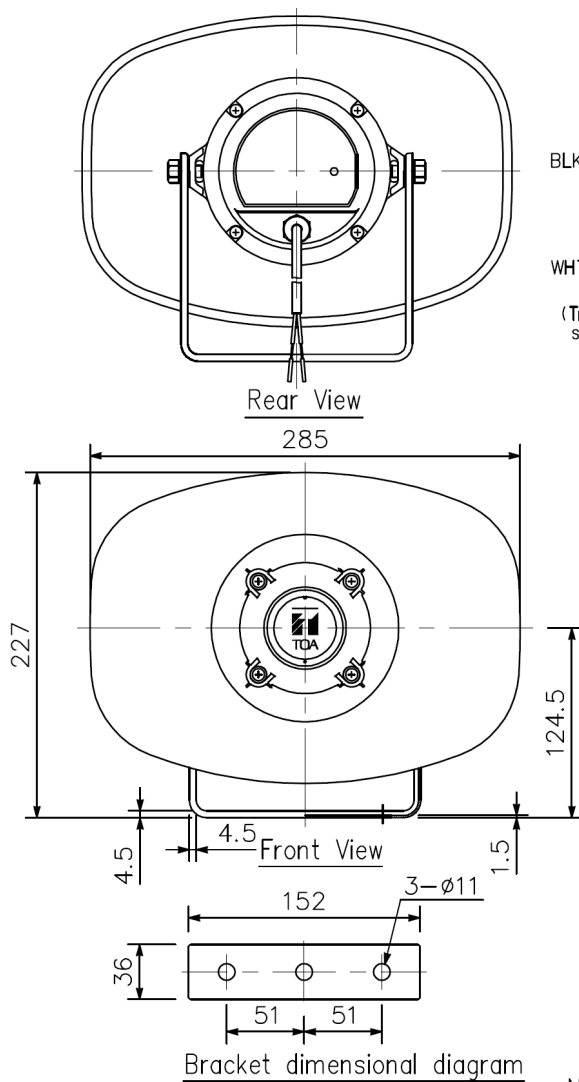
- Very rugged speaker with durable construction ensures long term reliable operation
- High quality sound
- High SPL
- Easy impedance selection through switch
- High impedance 100 V line
- Shock resistant oval horn

Specifications

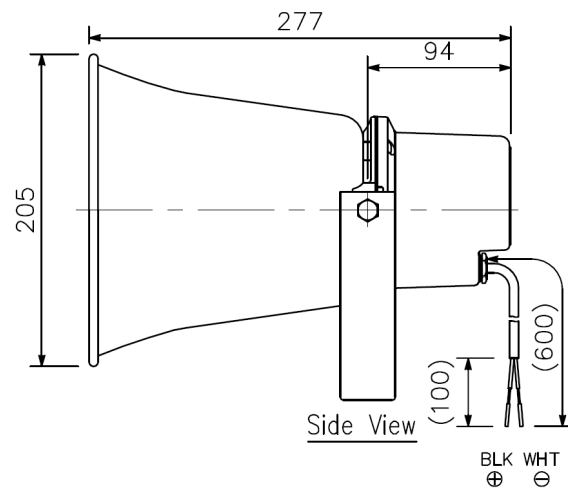
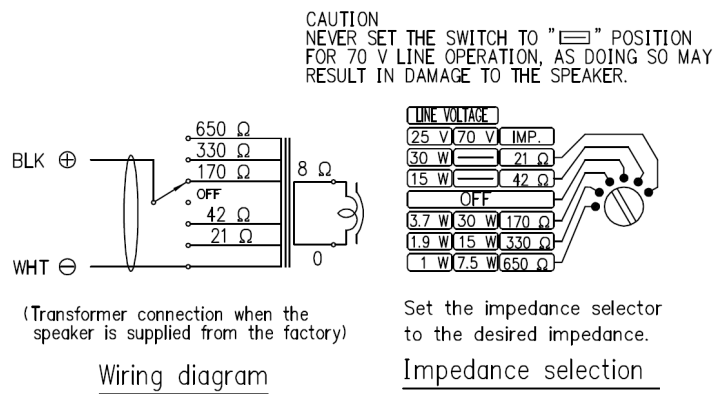
Rated Input	30 W
Rated Impedance	70 V line: 170 Ω (30 W), 330 Ω (15 W), 650 Ω (7.5 W) 25 V line: 21 Ω (30 W), 42 Ω (15 W), 170 Ω (3.7 W), 330 Ω (1.9 W), 650 Ω (1 W)
Sound Pressure Level	113 dB (1 W, 1 m at 500 Hz to 2.5 kHz peak level)
Frequency Response	250 Hz - 10 kHz
Polarity	Hot: Black, Com: White
Dust/Water Protection	IP65
Operating Temperature	-20 °C to +55 °C (-4 °F to 131 °F) (must be free from dew condensation)
Finish	Horn flare: Aluminum, off-white, powder coating Reflector horn and rear cover: ABS resin, off-white Bracket, screws and bolts: Stainless steel Speaker cable: Polyvinyl chloride insulated cabtyre cable (6 mm in diameter, 600 mm in length)
Dimensions	285 (W) x 227 (H) x 277 (D) mm
Weight	2 kg
Optional Accessories	Swivel bracket: YS-151S (Can be used instead of the supplied bracket.)

Note: Avoid installing the speaker in locations which vibrate considerably, or under environments easy to be oil-contaminated.

Dimensions



UNIT:mm



Note: Numerical values in parentheses are for reference only.

A&E specifications

The paging horn speaker shall be a double re-entrant design suitable for paging and tone signaling distribution. The speaker component shall be a compression driver with a phenolic diaphragm to prevent deformation from heat and moisture. Power handling shall be SC-610/T: 10 W; SC-615/T: 15 W; SC-630/T: 30 W; SC-650: 50 W. Impedance of non-transformer versions shall be SC-610/615/630: 8 ohms; SC-650: 16 ohms. The paging speaker shall include a matching transformer for connection to 25 V and 70.7 V speaker lines. Transformer wattage taps shall include SC-610T: 70.7 V: 10 W (500 ohms), 5 W (1k ohms), 2.5 W (2k ohms); 25 V: 10 W (63 ohms), 5 W (130 ohms), 1.3 W (500 ohms), 0.6 W (1k ohms), 0.3 W (2k ohms); SC-615T: 70.7 V: 15 W (330 ohms), 7.5 W (650 ohms), 3.8 W (1.3k ohms); 25 V line: 15 W (42 ohms), 7.5 W (83 ohms), 1.9 W (330 ohms), 1 W (650 ohms), 0.5 W (1.3k ohms); SC-630T: 70.7 V: 30 W (170 ohms), 15 W (330 ohms), 7.5 W (650 ohms); 25 V: 30 W (21 ohms), 15 W (42 ohms), 3.7 W (170 ohms), 1.9 W (330 ohms), 1 W (650 ohms). Sound pressure level measured at one m with one W of power applied from 500 to 2.5k Hz shall be SC-610/T: 110 dB SPL; SC-615/T: 112 dB SPL; SC-630/T: 113 dB SPL; SC-650: 108 dB SPL. Frequency response shall be SC-610/T: 315 - 12.5k Hz; SC-615/T: 280 - 12.5k Hz; SC-630/T: 250 - 10k Hz; SC-650: 250 - 6k Hz. Horizontal and vertical dispersion at -6 dB below the on-axis reference at 2k Hz shall be SC-610/T: 70° H x 100° V; SC-615/T: 70° H x 90° V; SC-630/T: 55° H x 70° V; SC-650: 55° H x 45° V. When used as a microphone, sensitivity referenced to 1k Hz, where 0 dB = 1 mW/10 dynes / cm² shall be SC-610/T: -24 dB; SC-615/T: -22 dB; SC-630/T: -20 dB. The paging horn shall comply with the IEC IP-65 standard for dust and moisture resistance and operate within a temperature range from -4° F to 131° F (-20° C to +55° C). The material / finish shall be horn flare: aluminum, off-white, powder coating, reflector horn and rear cover: ABS resin, off-white. All mounting hardware, including screws and bolts, shall be stainless steel. The paging horn shall include an integral speaker cable, insulated polyvinyl chloride type, with strain-relief, 0.24" (6 mm) diameter and 24" (600 mm) length. Dimensions (W x H x D) shall be SC-610/T: 6.77" x 6.34" x 7.40" (172 x 161 x 188 mm); SC-615/T: 8.74" x 7.04" x 9.21" (222 x 179 x 234 mm); SC-630/T: 11.22" x 8.94" x 10.91" (285 x 227 x 277 mm); SC-650: 15.39" x 11.93" x 12.87" (391 x 303 x 327 mm). Weight shall be SC-610: 1.76 lbs. (0.8 kg.); SC-610T: 2.43 lbs. (1.1 kg.); SC-615: 2.21 lbs. (1.0 kg.); SC-615T: 2.43 lbs. (1.1 kg.); SC-630: 3.09 lbs. (1.4 kg.); SC-630T: 4.19 lbs. (1.9 kg.); SC-650: 7.06 lbs. (3.2 kg.).

The paging horn shall be TOA model SC-610 / SC-610T / SC-615 / SC-615T / SC-630 / SC-630T / SC-650.

The optional swivel-mount bracket shall be TOA model YS-151S.